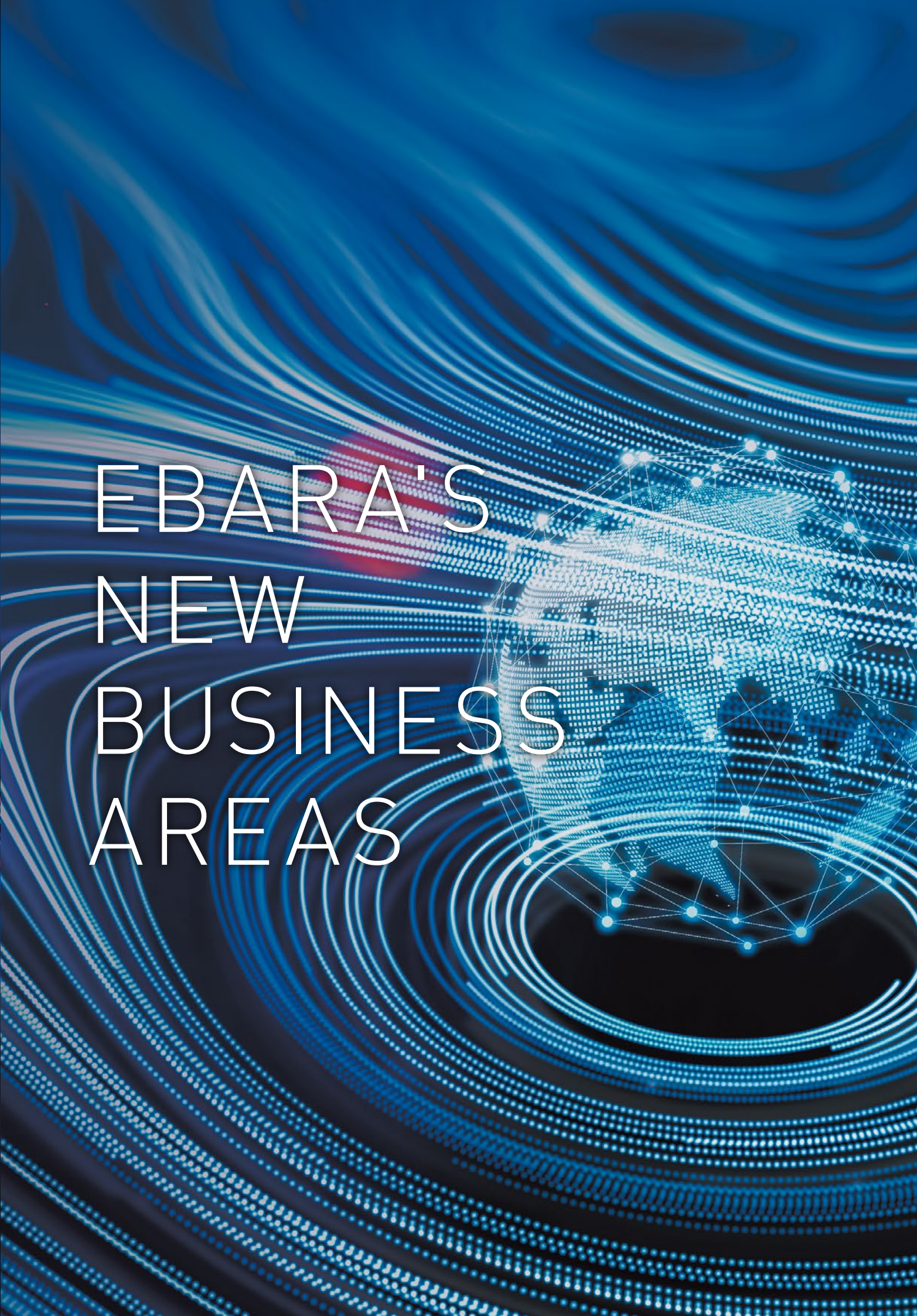




EBARA CORPORATION PROFILE

EBARA

EBARA CORPORATION

The background is a vibrant blue with a complex, futuristic design. It features numerous glowing, curved lines that create a sense of motion and depth. In the center-right, there is a digital globe composed of a grid of points and lines, resembling a network or data structure. The overall aesthetic is high-tech and modern.

EBARA'S
NEW
BUSINESS
AREAS

EBARA will continue to support across the globe for the next 100 years with its passion

Since our founding in 1912, we have continued to provide products and services that are essential for day-to-day living and for industries around the world, contributing to the resolution of social issues, and the preservation and improvement of the global environment. Looking ahead to the next 100 years, we strive to be a manufacturer of industrial machinery that grows and develops its business on a global scale.

EBARA's New Business Areas



AEROSPACE

Expanding the commercial applications of outer space through the development of rocket components

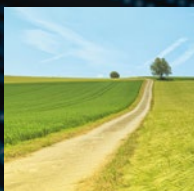
As the commercialization of outer space grows, a new transportation infrastructure connecting the ground to space is waited to be established. EBARA has started the development of New-Age products aiming for the full-scale launch of our aerospace business.



HYDROGEN

Creating Hydrogen businesses unique to EBARA to build Hydrogen society globally

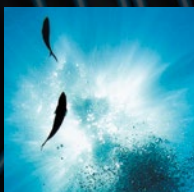
Efforts to build a global hydrogen-based society are accelerating in preparation for carbon neutrality by 2050. Having technologies that are compatible with a global Hydrogen society, we aim to create Hydrogen businesses unique to EBARA in the fields of "Production, Transportation and End-use".



ECO

Building a sustainable business model to supply water to 600 million people on the globe

As global issues such as global warming and resource depletion are becoming more serious every year, we are developing water infrastructure in various regions with the aim of supplying water to 600 million people on the globe. We will build a sustainable business model to address the needs of each country and region.



MARINE

Developing aquaculture systems "to rest the sea" to solve food and environmental issues

To address food and environmental problems associated with increased demand for fishery resources, we have developed a fully-closed land-based aquaculture system, based on the concept of "to rest the sea". By utilizing technologies such as fluid and thermal control, we aim to ensure a stable supply of fishery resources.



BIO

Creating new businesses through the synergy of the technologies of machinery manufacturers and of emerging biotechnology

EBARA's strengths will be applied in thermal fluid technology and system engineering technology in fields such as regenerative medicine, cell agriculture and decarbonized resources. We are developing technologies and creating new businesses in cutting-edge fields where biotechnology is utilized.

Founding Spirit



“Passion and Dedication” is the words that Issey Hatakeyama, the founder of EBARA Corporation, lived by.

He acted in accordance with his philosophy of approaching daily tasks with passion, dedication, integrity, and ingenuity in order to spur personal and corporate growth, and encouraged employees to adopt the same approach. The founding spirit of “Netsu to Makoto,” or “Passion and Dedication”, forms the basis of all the EBARA Group employees’ attitudes, ideas, and work ethic to develop technologies, products, and services that contribute to society.

Corporate Philosophy

We contribute to society through high-quality technologies and services relating to water, air and the environment.

We strive to contribute to society by supporting the development of the world and the realization of safe, secure, and abundant society. With our technical capabilities, we develop and provide products that solve social issues and meet the needs of society as well as service and support that our products can be used efficiently. This is the mission of EBARA.

MESSAGE FROM THE PRESIDENT



“Technology. Passion. Support our Globe” as a global industrial machinery manufacturer that keeps growing.

Since our founding in 1912, EBARA has been supporting social and industrial infrastructures as an industrial machinery manufacturer with its main business of pumps. We have expanded our business areas steadily to include chillers, blowers, compressors and turbines, design, construction, and operation and management of waste treatment plants, and equipment and devices for semiconductor manufacturing.

Amidst a rapidly changing business environment, EBARA established our long-term vision “E-Vision 2030” to realize our desired vision by 2030. With “Technology. Passion. Support our globe” as our slogan, EBARA will support social and industrial infrastructures around the world and abundant lifestyles for all.

EBARA will continue to contribute to society at large for the next 100 years to come by providing products and services that will make our customers happy.

Masao Asami
Director
President, Representative Executive Officer, CEO & COO

From social infrastructure to aerospace, EBARA's technologies support businesses globally

In order to support advancement of life and in industries, EBARA continues to create value in diverse business fields from customer- and society-centric perspectives.

Building Service & Industrial Company

Providing a range products and technologies to support stable supplies of water, air and heat

We provide a wide range of pumps, blowers, chillers, and cooling towers to meet diverse needs, such as water supply and drainage to support daily life, transportation of various fluids used in factories, and cooling during production processes. We support a comfortable and secure living environment and industrial development. We also promote the development of energy-saving equipment and contribute to the reduction of life cycle costs and CO₂ emissions.



For further information, please visit our website.

<https://www.ebara.co.jp/en/building-industry/index.html>



Main products

- Pumps
- Fans
- Chillers
- Cooling towers

Main target markets

- Housing
- Office buildings
- Sports stadiums, commercial facilities, hotels
- General industrial facilities

Energy Company

Aiming to be the best global solutions provider in the energy sector

By offering exceptional customer service and advanced, reliable equipment, such as the EBARA brand pumps and the Elliott brand compressors and turbines, we strive to provide the best solutions mainly in sectors including oil and gas, electric power, hydrogen and ammonia. By promoting next-generation energy sources through our special fluid (gas/liquid) pumping technology and cryogenic technology, we also contribute to building a sustainable society.



For further information, please visit our website.

<https://www.ebara.co.jp/en/energy/index.html>



Main products

- Pumps
- Compressors and turbines
- Cryogenic pumps and expanders

Main target markets

- Oil and gas
- Electricity
- Next-generation energy

Infrastructure Company

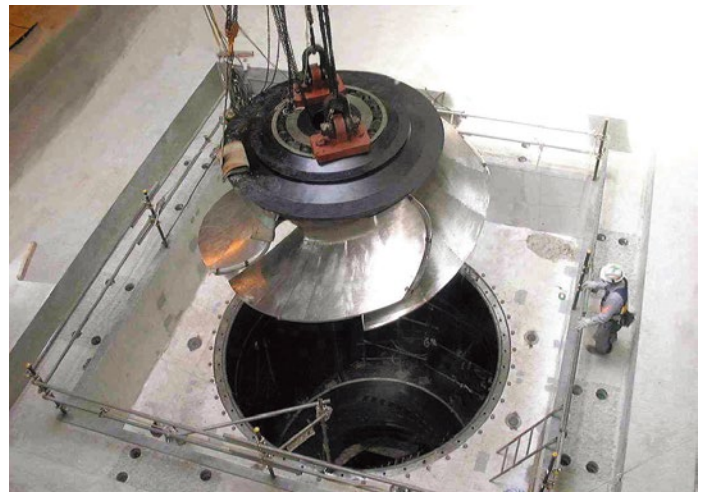
Delivering comprehensive solutions to the infrastructure issues that society faces

In order to solve issues such as providing safe and secure water supply, irrigation for agriculture, and flood control, we provide comprehensive support ranging from new construction to inspections, and maintenance in the field of infrastructure facilities such as pumping stations, sewage treatment plants, water purification plants, and tunnels. EBARA contributes to the construction of safe and secure social infrastructure by providing comprehensive solutions that utilize our expertise in plant design and a wide range of products.



For further information, please visit our website.

<https://www.ebara.co.jp/en/infrastructure/index.html>



Main products

- Pumps
- Blowers

Main target markets

- Water & sewage
- Agriculture
- Flood control
- Tunnel ventilation

Environmental Solutions Company

Supporting the realization of a sustainable society through waste recycling solutions

We support a clean urban environment and safe and secure lifestyle by providing the latest solid waste treatment technologies and services based on our many years of experience, and by designing, operating, and managing waste incineration facilities and wood biomass power plants. With over 400 waste treatment plants delivered in Japan, we aim to be a provider of waste recycling solutions that contribute to the realization of a sustainable society.



For further information, please visit our website.

<https://www.ebara.co.jp/en/eep/index.html>



Main businesses

- Waste treatment plants
- Wood biomass power plants
- Chemical recycling

Main target markets

- Solid waste treatment
- Waste-to-Energy (WTE) plants
- Recycling and resource circulation
- Renewable energy

Precision Machinery Company

Accelerating industry advancement through world-class technology and support systems

We are a leading company in vacuum and planarization technologies that support state-of-the-art manufacturing sites. EBARA has the second largest share of the global market for dry vacuum pumps and chemical mechanical polishing (CMP) systems, which are essential for semiconductor manufacturing, and also supplies various products such as exhaust abatement systems, ozonized water generators, and precision chillers. Our highly sophisticated and reliable global support system has made us the preferred supplier for the manufacturing industry and for R&D applications including for solar panel, chemical, pharmaceutical, and other industries.



For further information, please visit our website.

<https://www.ebara.co.jp/en/precision/index.html>



Main products

- Dry vacuum pumps
- CMP systems
- Exhaust abatement systems
- Plating systems
- Ozonized water generators
- Precision chillers

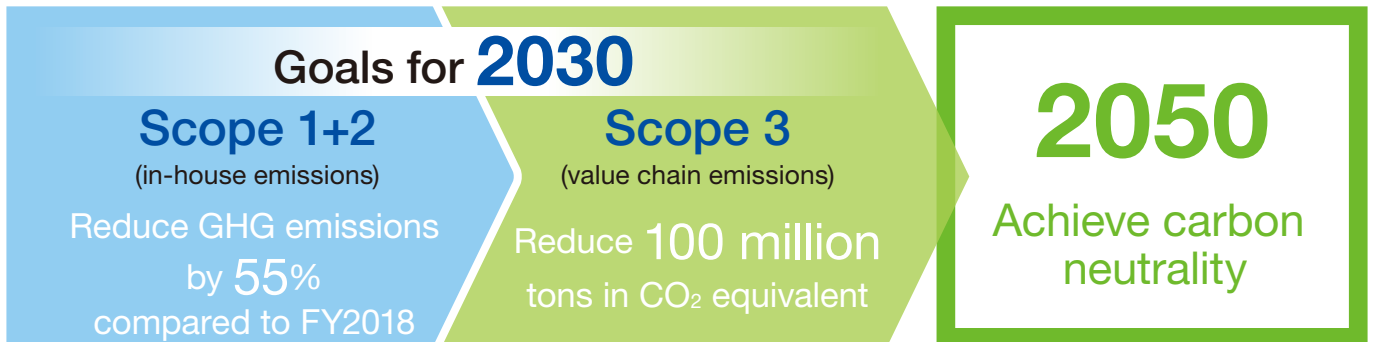
Main target markets

- Semiconductor manufacturing
- Solar panels, chemicals, pharmaceutical, and others
- Research and development

Carbon Neutral Initiatives for Net Zero GHG Emissions

EBARA's Goals for GHG Emission Reduction

To achieve carbon neutrality by 2050 and contribute to building a sustainable society, EBARA is committed to evolving ESG-focused management. We aim to reach the targets for our company as well as the value chain and achieve net zero GHG emissions by 2050. To achieve carbon neutrality, we will continue to reduce environmental impact through our business activities and the provision of our products and services.



* GHG: Abbreviation for "greenhouse gases"

* Reduce GHG emissions by 55%: Estimated and calculated based on our company's GHG emissions for 2018 and net sales targets for 2030, in accordance with the Japanese government's 2030 goal (46% reduction compared to FY2013).

Evolution of ESG-focused Management

Implement advanced ESG-focused management for a sustainable society

E: Environment **S: Social** **G: Governance**

Action Policy

Carbon neutrality

Contribute to society and environment through our products and services, promote diversity, and respect human rights

Further enhance corporate governance

Carbon Neutrality

- Reduce environmental impact through business activities (SCOPE 1 and 2)
- Reduce environmental impact through provision of products and services (SCOPE 3)
- Absorb and eliminate GHGs through the commercialization of chemical recycling technology for waste plastics, etc.



EBARA CORPORATION

11-1 Haneda Asahi-cho, Ota-ku,
Tokyo 144-8510, Japan
Tel: +81-3-3743-6111
<https://www.ebara.co.jp/en/>

