



EBARA CORPORATE PROFILE

EBARA

EBARA CORPORATION

The background is a deep blue with dynamic, flowing lines that create a sense of motion and depth. On the right side, there is a stylized globe composed of a grid of dots and connecting lines, representing a digital or networked world. The text is positioned on the left side, overlaid on the flowing lines.

EBARA'S NEW BUSINESS AREAS

Supporting the world of the next century

This is the new passion of the EBARA Group.

Since our founding in 1912, we have continued to provide products and services that are essential for day-to-day living and for industries around the world, contributing to the resolution of social issues, and the preservation and improvement of the global environment. Looking ahead to the next 100 years, we strive to be a manufacturer of industrial machinery that grows and develops its business on a global scale.

New Business Areas of the EBARA Group



AEROSPACE

Expanding the commercial applications of outer space through the development of rocket components

As the commercialization of outer space grows, a new transportation infrastructure connecting the ground to space is waited to be established. EBARA has started the development of New-Age products aiming for the full-scale launch of our aerospace business.



HYDROGEN

Creating Hydrogen businesses unique to EBARA to build Hydrogen society globally

Efforts to build a global hydrogen-based society are accelerating in preparation for carbon neutrality by 2050. Having technologies that are compatible with a global Hydrogen society, we aim to create Hydrogen businesses unique to EBARA in the fields of "Production, Transportation and End-use".



ECO

Building a sustainable business model to supply water to 600 million people on the globe

As global issues such as global warming and resource depletion are becoming more serious every year, we are developing water infrastructure in various regions with the aim of supplying water to 600 million people on the globe. We will build a sustainable business model to address the needs of each country and region.



MARINE

Developing aquaculture systems "to rest the sea" to solve food and environmental issues

To address food and environmental problems associated with increased demand for fishery resources, we have developed a fully-closed land-based aquaculture system, based on the concept of "to rest the sea". By utilizing technologies such as fluid and thermal control, we aim to ensure a stable supply of fishery resources.



BIO

Creating new businesses through the synergy of the technologies of machinery manufacturers and of emerging biotechnology

EBARA's strengths will be applied in thermal fluid technology and system engineering technology in fields such as regenerative medicine, cell agriculture and decarbonized resources. We are developing technologies and creating new businesses in cutting-edge fields where biotechnology is utilized.

Founding Spirit



“Passion and Dedication” is the words that Issey Hatakeyama, the founder of EBARA Corporation, lived by.

He acted in accordance with his philosophy of approaching daily tasks with passion, dedication, integrity, and ingenuity in order to spur personal and corporate growth, and encouraged employees to adopt the same approach. The founding spirit of “Netsu to Makoto,” or “Passion and Dedication”, forms the basis of all the EBARA Group employees’ attitudes, ideas, and work ethic to develop technologies, products, and services that contribute to society.

Corporate Philosophy

We contribute to society through high-quality technologies and services relating to water, air and the environment.

We strive to contribute to society by supporting the development of the world and the realization of safe, secure, and abundant society. With our technical capabilities, we develop and provide products that solve social issues and meet the needs of society as well as service and support that our products can be used efficiently. This is the mission of EBARA.

MESSAGE FROM THE PRESIDENT

Aiming for Further Evolution to the Next Level as a “Global Excellent Company”

Since its founding in 1912, the EBARA Group has supported social and industrial infrastructure as a leading manufacturer of industrial machinery centered around pumps. Over the years, we have steadily expanded our expertise to include chillers, fans, compressors & turbines, the design, construction, and operation management of waste treatment plants, and equipment for semiconductor manufacturing. Furthermore, we are venturing into new fields such as hydrogen-related businesses, aerospace, marine, and bio, building on our core technologies.

Amidst the rapidly changing business environment, we have set forth our long-term vision, E-Vision 2030, to support social and industrial infrastructure worldwide and realize abundant lifestyles for all. As we look ahead to the next 100 years, the EBARA Group remains committed to supporting society through our products and services.

Shugo Hosoda

Director, CEO & COO
President, Representative Executive Officer



From social infrastructure to hydrogen and aerospace:

A wide range of EBARA Group technologies that support global business fields

To support advances in lives and industries around the world, the EBARA Group is continuing to create value starting from customers and societies in a wide range of business fields.

Building Service & Industrial Company

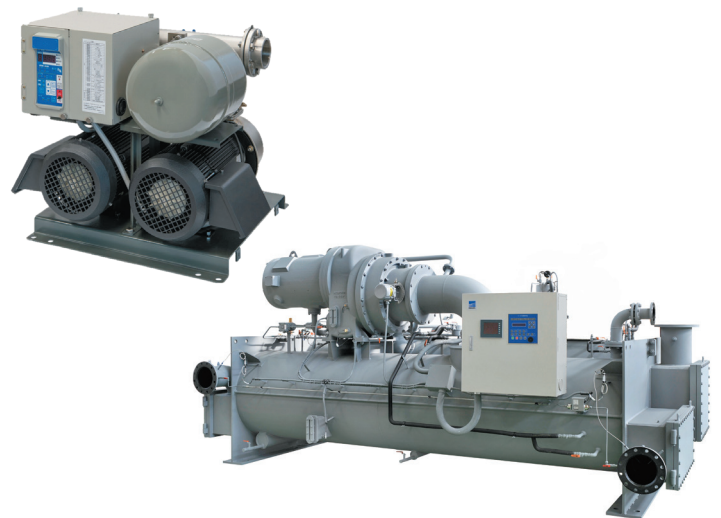
We offer total solutions for the pumps, blowers, chillers, and cooling towers that are used in everyday infrastructure, industrial facilities, and other areas.

The products we offer meet diverse needs to support the advancement of living environments and industries around the world that deliver comfort and reliability, such as water supply and drainage to support daily life, heating/cooling and air supply and ventilation for buildings and commercial facilities, and various fluid transfer pumps used in factories. We also promote the development of energy-saving equipment and contribute to the reduction of life cycle costs and CO₂ emissions.



For further information, please visit our website.

<https://www.ebara.co.jp/en/building-industry/index.html>



Main products

- Pumps
- Fans
- Chillers
- Cooling towers

Main target markets

- Housing
- Office buildings
- Sports stadiums, commercial facilities, hotels
- General industrial facilities

Energy Company

We aim to become the best solution provider in the energy sector, and contribute to the construction of a sustainable society.

It is our goal to provide the best solutions by offering exceptional customer service and advanced, reliable equipment such as EBARA brand pumps and Elliott brand compressors and turbines in primary fields such as oil and gas, electric power, hydrogen, and ammonia. We also will contribute to the construction of a sustainable society by expanding next-generation energy sources through our expertise in special fluid (gas/liquid) pumping technology and ultra-low temperature technology.



For further information, please visit our website.

<https://www.ebara.co.jp/en/energy/index.html>



Main products

- Pumps
- Compressors and turbines
- Cryogenic pumps and expanders

Main target markets

- Oil and gas
- Electricity
- Next-generation energy

Infrastructure Company

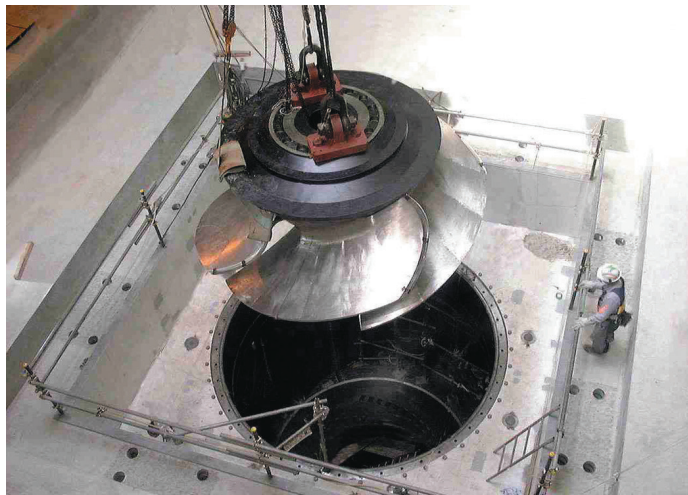
To meet customer needs, we propose optimal engineering solutions that solve social issues.

In the field of infrastructure facilities such as pumping stations, sewage treatment plants, water purification plants, tunnels, irrigation, and agriculture, we provide comprehensive support ranging from new construction to inspections and maintenance, as well as solutions tailored to the features of each facility. The plant design expertise developed over many years and our wide range of products allow us to contribute to the construction of safe and dependable social infrastructure.



For further information, please visit our website.

<https://www.ebara.co.jp/en/infrastructure/index.html>



Main products

- Pumps
- Blowers

Main target markets

- Water & sewage
- Agriculture
- Flood control
- Tunnel ventilation

Environmental Solutions Company

We contribute to creating a sustainable society by providing waste resource recycling solutions optimized for each region.

Through comprehensive support from construction to operation of waste treatment plants, we support healthy urban environments and safe and secure living. We also provide recycling systems that utilize waste and energy within the region, including waste-to-energy and recycling of incinerator ash. A focus on making advances in the construction and operation of waste treatment plants by utilizing AI and IoT, and on developing new technologies and services as a resource recycling solutions provider, is part of our approach to building better societies.



For further information, please visit our website.

<https://www.ebara.co.jp/en/eep/index.html>



Main businesses

- Waste treatment plants
- Wood biomass power plants
- Chemical recycling

Main target markets

- Solid waste treatment
- Waste-to-Energy (WTE) plants
- Recycling and resource circulation
- Renewable energy

Precision Machinery Company

We deliver stable operations and increased productivity with world-class technologies and global support.

As a leader in vacuum and planarization technologies, EBARA supplies various products worldwide, including Chemical Mechanical Polishing (CMP) systems, which play a vital role in semiconductor manufacturing, dry vacuum pumps, exhaust abatement systems, and ozonized water generators. We also utilize our high-performance, high-reliability, and dependable global support system to apply these products in the solar panel, chemical, medical, and other manufacturing industries and R&D in order to support advances in industry.



For further information, please visit our website.

<https://www.ebara.co.jp/en/precision/index.html>



Main products

- Dry vacuum pumps
- CMP systems
- Exhaust abatement systems
- Plating systems
- Ozonized water generators

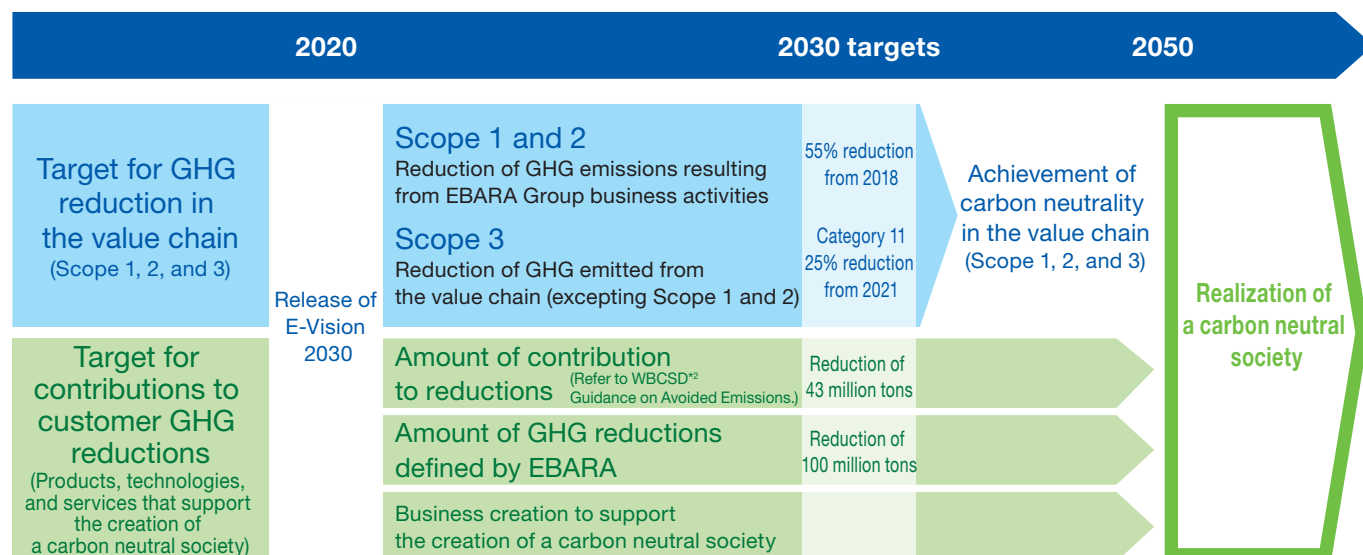
Main target markets

- Semiconductor manufacturing
- Solar panels, chemicals, pharmaceutical, and others
- Research and development

EBARA Group Initiatives for Carbon Neutrality

The EBARA Group aims to achieve carbon neutrality in our value chain by 2050.

Through our products, we will support customer GHG*¹ reductions and contribute to the creation of a carbon neutral society.



*1 GHG: Abbreviation for "greenhouse gases"

*2 WBCSD: World Business Council for Sustainable Development

Evolution of ESG-focused Management

Implement advanced ESG-focused management for a sustainable society

E: Environment **S: Social** **G: Governance**

Action Policy



Carbon Neutrality

- Reduce environmental impact through business activities (Scope 1 and 2)
- Reduce environmental impact through provision of products and services (Scope 3)
- Absorb and eliminate GHGs through the commercialization of chemical recycling technology for waste plastics, etc.



EBARA CORPORATION

11-1 Haneda Asahi-cho, Ota-ku,
Tokyo 144-8510, Japan
Tel: +81-3-3743-6111
<https://www.ebara.co.jp/en/>

